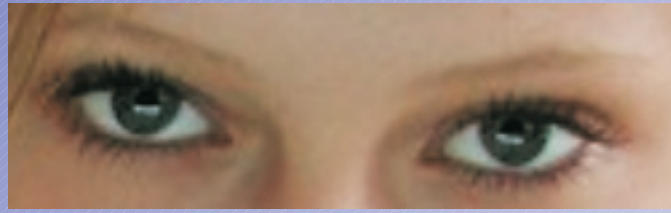




KDI Universal Programmer 3.0



3 Programmers in 1 Device AVR + MCS51 + EEPROM

Introduction

The KDI Universal Programmer (Ver. 3.0) is a professional low cost parallel programmer, covering most of the classic and mega AVR 8-bit RISC microcontrollers, both I2C and Microwire serial EEPROMs and also MCS-51 family of Atmel corporation. The programmer connects to the PC through a standard parallel port and programs the supported chips via a very user friendly software.

Features

- Supports all versions of Microsoft® Windows® including Windows 95/98/Me/NT/2000/XP
- Manually editable input and output data arrays
- Parallel programming, a fast and reliable programming method
- Programs both Flash and EEPROM
- Supports Fuses and Lock Bits Programming
- Newer versions of the software are always available on KDI's website
- Parallel port interface to PC for programming and control
- Digital warranty system
- Programs both the AVR and the MCS-51 (8051) microcontrollers families
- Programs both the 2-Wire (I2C) and the 3-Wire (Microwire) serial EEPROMs
- Accepts both ".bin" and ".hex" files
- Automatic detecting of the chip
- Saving the microcontroller's Flash and EEPROM memory to disk
- Intelligent menu driven software which automatically detects the type of microcontroller that is placed on the board and changes the menus respecting the unique features of the microcontroller

Device Support

KDI Universal Programmer supports most of the classic and Mega AVR and the MCS-51 microcontrollers and also the 2-Wire and the 3-Wire serial EEPROMs. Support for new devices will be added with new versions of the KDI universal programmer. The latest version of KDI Universal Programmer is always available from www.kdi-co.com.

The following devices are currently supported (Ver. 3.0):

AVR	8051	Serial EEPROM	
		2-Wire	3-Wire
ATmega16	AT89C51	AT24C01 AT24C02 AT24C04 AT24C08 AT24C16 AT24C32 AT24C64 AT24C128 AT24C256	AT93C46 AT93C56 AT93C66
ATmega32	AT89C52		
ATmega8515	AT89C55		
ATmega8535	AT89S51		
ATmega323	AT89S52		
ATmega163	AT89S8252		
AT90S1200	AT89C1051		
AT90S2313	AT89C2051		
AT90S8515	AT89C4051		
AT90S8535			

